

Installation

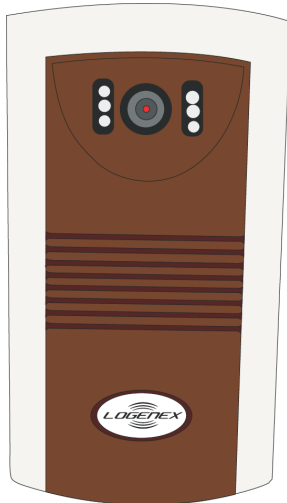
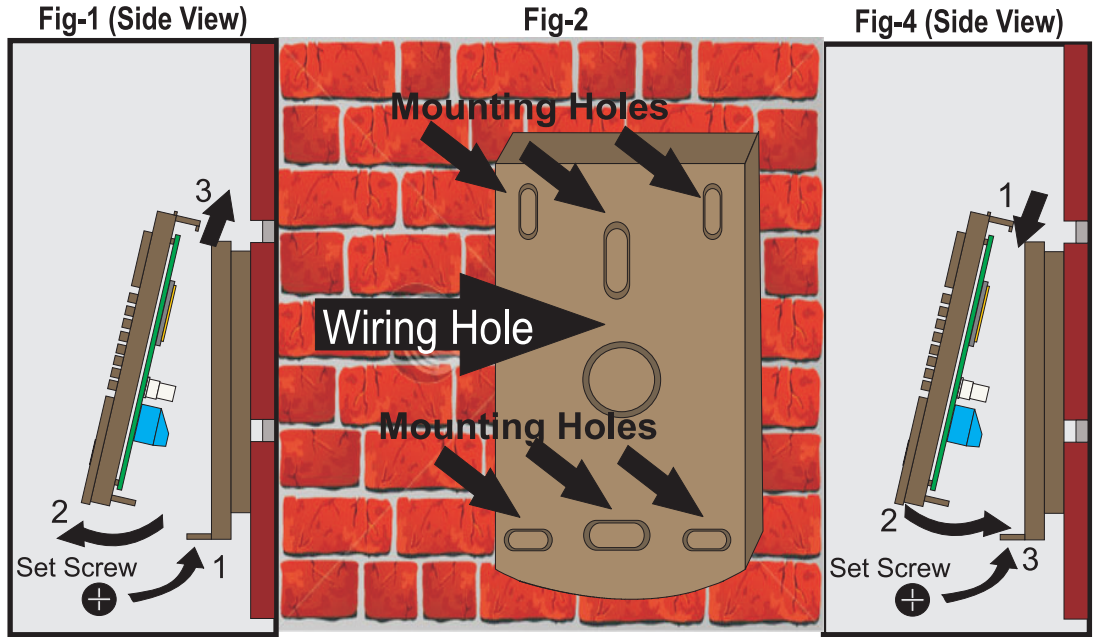
1) Separate back housing from front housing. See Fig-1; Step 1
 Remove set screw Step 2: swing bottom of housing out. Step 3: pull back housing out from top hinge.

2) Mount back box using desired mounting hole knock outs and secure firmly. See Fig-2 for knock out locations.

** Note: We recommend that you use silicon sealer to protect the wiring around the hole.

4) See Fig-3 for wiring instructions.

5) Mount front housing of Door Speaker on the secured back box. Secure front housing using bottom set screw. See Fig-4 Steps 1, 2 & 3



AD102-XVC

VIDEO MODEL SETUP

6) Connect 12 volt incoming power from 12 volt transformer (supplied in kit) into the terminals label +12V and -12V.

7) Connect the video output to your wires via the terminals labelled +VIDEO and -VIDEO.

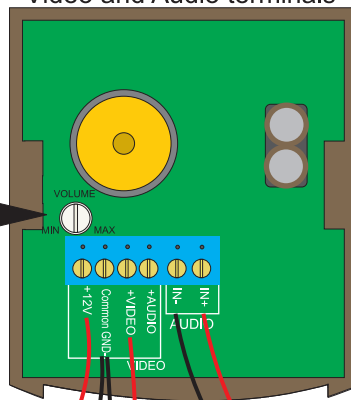


AD102-X

AUDIO ONLY MODEL SETUP

1) Connect IN- IN+ from C304CR to Speaker Audio IN- IN+

Fig-3 Inside of Door Speaker Video and Audio terminals



Volume Control may need to be adjusted to accommodate for different acoustic environments.

